

Luxurious interiors

inspired by nature



NATUREPANEL

Each Naturepanel decor showcases a unique natural charm, with delicate integrated sapwood elements and fine knots to create an authentic appearance.



**Bleached
Cuneo Oak**

Contemporary, fresh, light

08



**Brown
Cuneo Oak**

Soft, warm, elegant

10



**Warmia
Walnut**

Deep, rich, dramatic

12

Timeless interiors
that are full of possibilities

N

inspired by nature



Easy to keep clean



100% waterproof



Quick & easy to install



30 year warranty

Bring the outdoors in for a traditional Scandi finish

With an emphasis on natural materials, this range will allow you to embrace simplicity and minimalism with designs that are clean and visually balanced.

Using the latest technology, we etch a 6.4mm shadow line into our Naturepanel decor laminates, providing the depth of traditional wood panelling without the maintenance.

Being 100% waterproof Naturepanel wall panels are ideal for bathrooms, shower cubicles, gyms, and hotels, and are easy to clean, quick to install and FSC®-certified.

Why Naturepanel?

Our company

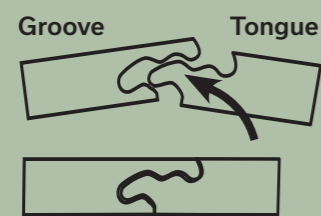
Since 1881, Grant Westfield has been dedicated to manufacturing exceptional interior building products in Edinburgh. Throughout the course of over 140 years, successive generations have upheld a shared passion for craftsmanship, high quality, and innovation. Grant Westfield is the home of the UK's leading bathroom wall panel, Multipanel which launched in 2003, producing around 8000 panels per week.

Off the success of Multipanel, Grant Westfield now brings you Naturepanel. The launch of Naturepanel aims to provide a contemporary alternative to traditional slat wall - one that not only boasts an appealing aesthetic but also ensures effortless installation and convenient maintenance. Naturepanel and Multipanel pair perfectly together due to the unique Hydrolock joint which allows for easy installation across both collections.

Hydrolock

We created Hydrolock® to enhance the visual impact of our wall panels.

Precisely engineered, the Hydrolock® edge allows panels to be joined together, without the use of mid-joints, to create a smooth, almost seamless expanse of waterproof walls. With an industry leading 6mm tolerance for fitting over uneven surfaces, Hydrolock® panels are easy to install and produce a great finish every time.



Quality

Our reputation is built on the exceptional quality of our products. We have full confidence in their durability, which is why we offer a comprehensive 30-year warranty. To ensure the highest quality, our raw materials undergo meticulous testing to ensure compatibility with our precise Hydrolock® joint.

Our commitment to excellence extends across all aspects of our business, as demonstrated by our ISO 9001:2015 certification for quality management and our ISO 14001 certification for environmental management.

30 year warranty



Declarations of all product performance are available at naturepanel.co.uk. Installation guidelines and full details on each product warranty can be downloaded from naturepanel.co.uk, or emailed on request. Naturepanel High Grab Panel Adhesive/Sealant must be used and is available to order from your local distributor or showroom. Naturepanel 30 year warranty* covers the unlikely failure of the product, and will be invalid if any published installation and care guidelines are deemed not to have been followed.

*Applies to all Naturepanel Wall Panels. Full warranty details for all products are available at naturepanel.co.uk.

Helping to protect our forests for the future

Sustainability

Naturepanel is FSC®-certified. This ensures the timber we use originates from responsibly managed forests and other controlled sources, and our finished products comply with globally recognised ecological, social and economic standards for complete customer assurance on responsible sourcing.

Our panels are 100% recyclable and we recycle 99% of post-production waste into biomass materials. We have also achieved ISO 14001, demonstrating our commitment to the environment.

Through our Environmental Product Declaration (EPD) we can demonstrate that Naturepanel is one of the most sustainable wall coverings available in the UK. The EPD covers all environmental impacts from cradle to grave, has been independently verified and can be downloaded from naturepanel.co.uk/certifications.

Made in Britain

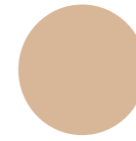
We are proud members of Made in Britain and all Naturepanel wall panels are manufactured in our Edinburgh factory. We source over 90% of our raw materials from the UK & Ireland, supporting the local economy and minimising our impact on the environment.



The mark of responsible forestry
Look for our FSC®-certified products



Contemporary, fresh, light



This contemporary fresh, light oak features natural colours and greyish wood tones for a captivating interior that is serene and tranquil.

Panel size information

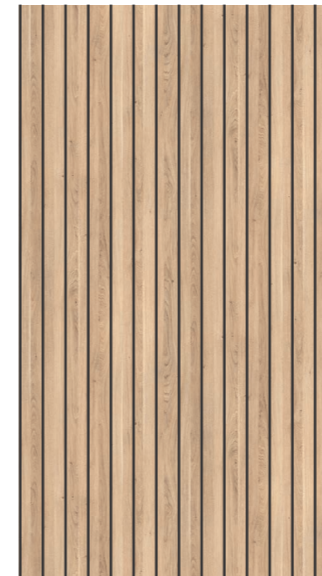
Panels in the Naturepanel Collection are 598mm wide and all feature our Hydrolock® edge. Please note that the Hydrolock® edge reduces the finished face of the panel by 18mm, i.e. 2400mm x 598mm becomes 2400mm x 580mm.

- 14 slats
- 35mm wood slat
- 6.4mm shadow gap

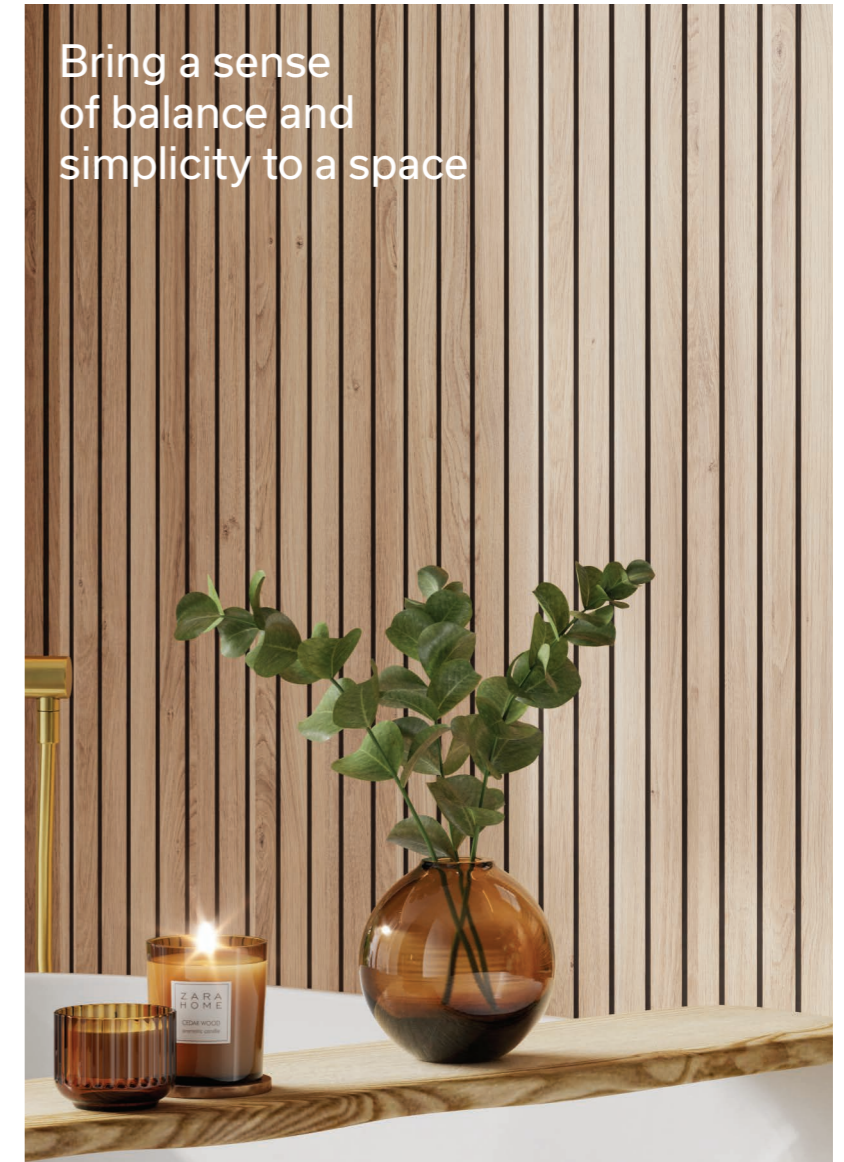
All panels are 11mm thick.



Bleached Cuneo Oak



Bleached Cuneo Oak
NP3311

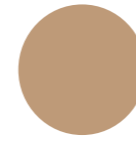


Bring a sense of balance and simplicity to a space

inspired by nature 

The products on this page are FSC®-certified

Soft, warm, elegant



This beautiful soft toned brown adds warmth and elegance for a refined, modern space that is cosy and stylish.

Panel size information

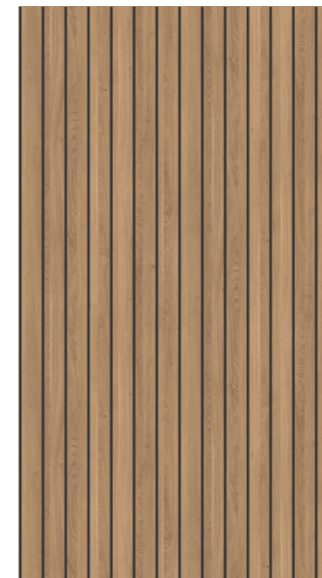
Panels in the Naturepanel Collection are 598mm wide and all feature our Hydrolock® edge. Please note that the Hydrolock® edge reduces the finished face of the panel by 18mm, i.e. 2400mm x 598mm becomes 2400mm x 580mm.

- 14 slats
- 35mm wood slat
- 6.4mm shadow gap

All panels are 11mm thick.



Brown Cuneo Oak



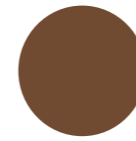
Brown Cuneo Oak
NP3317



inspired by nature 

The products on this page are FSC®-certified

Deep, rich, dramatic



This rich brown shade adds depth and drama for an eye-catching interior that will make an impact.

Panel size information

Panels in the Naturepanel Collection are 598mm wide and all feature our Hydrolock® edge. Please note that the Hydrolock® edge reduces the finished face of the panel by 18mm, i.e. 2400mm x 598mm becomes 2400mm x 580mm.

- 14 slats
- 35mm wood slat
- 6.4mm shadow gap

All panels are 11mm thick.



Warmia Walnut



Warmia Walnut
NP1307



inspired by nature

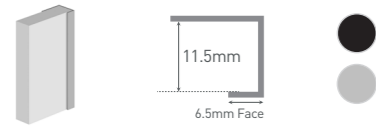
The products on this page are FSC®-certified

The next steps...

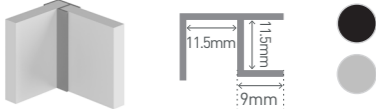
Wall panel profiles

To finish off edges or to join panels in a corner, the appropriate profiles must be used. Use the table below to help you select the right profiles for your design.

End Cap (L-Shaped) **Type C** - MPEC

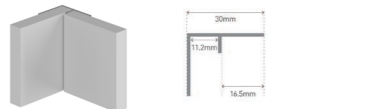


Flush Corner **Type 100** - MPEX



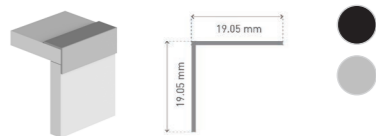
For external or internal corners

Invisible Corner **Type 101** - MPIHCML



For straight walls and a completely profile free finish

Angle Profile **Type 102** - MPAP



Please note: All 3D drawings are a generic representation of the profile type. Dimensions specific to each range are shown on the line drawings.

Available colours

● Black ● Satin

Panel adhesive

Naturepanel High Grab Adhesive should be used for a safe and secure fit.

The high-quality panel adhesive was developed specifically for Naturepanel and is the perfect colour match to the decor shadow line.

● **Graphite Grey**
NPSILGG

Installation tips

Installing Naturepanel could not be easier due to our unique Hydrolock tongue and groove system. Unlike traditional acoustic slat walls, Naturepanel is 100% waterproof when sealed correctly.

Naturepanel can be installed vertically or horizontally and can be easily cut to the desired size using a hand or power saw. Vertical panels give the illusion that the walls and ceilings are taller and are a way to counterbalance horizontal lines already present in a room such as shelves and tables. Horizontal walls are unique and give the illusion that a room is larger and more spacious.

For information on how to install our products, please visit naturepanel.co.uk/product_literature



Bleached Cuneo Oak



Looking for inspiration?



Naturepanel



@Naturepanel_uk



@Naturepanel

Naturepanel
3 Westfield Avenue
Edinburgh EH11 2QH

t. 0131 337 6262
e. info@naturepanel.co.uk
w. www.naturepanel.co.uk

NATUREPANEL



GRANT WESTFIELD

Please note: the images reproduced in this brochure are within the constraints of the printing process and are not to be used for colour matching purposes. Samples are available from your local showroom or online at naturepanel.co.uk.